

15 -ാം കേരള നിയമസഭ

16 -ാം സമ്മേളനം

നക്ഷത്ര ചിഹ്നം ഇല്ലാത്ത ചോദ്യം നം. 131

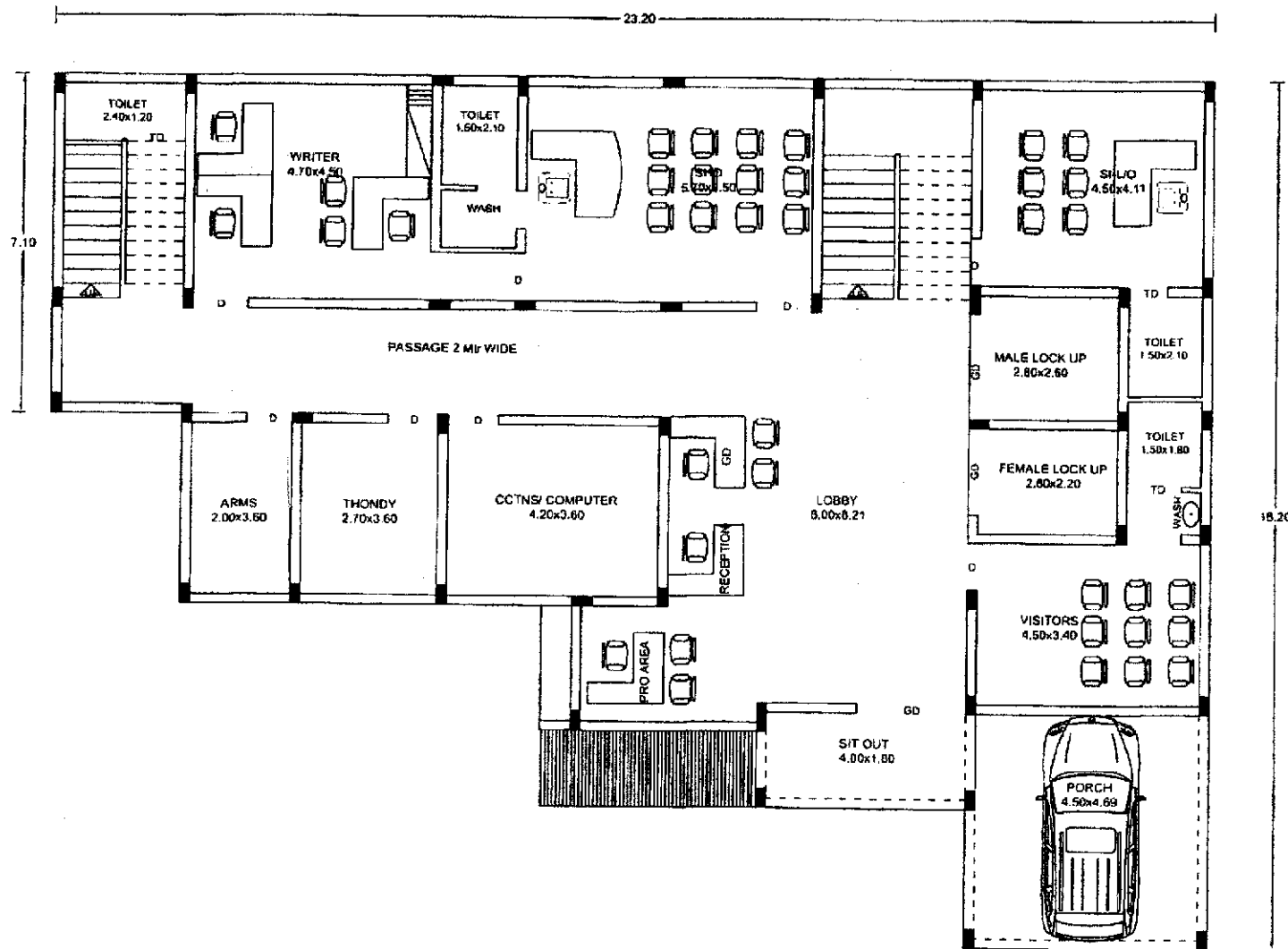
27-01-2026 - ൽ മറുപടിയ്ക്ക്

കടുത്തുരുത്തി പോലീസ് സ്റ്റേഷൻ പുതിയ കെട്ടിടം

ചോദ്യം		ഉത്തരം	
ശ്രീ. മോൻസ് ജോസഫ്		ശ്രീ. പിണറായി വിജയൻ (മുഖ്യമന്ത്രി)	
(എ)	കടുത്തുരുത്തി പോലീസ് സ്റ്റേഷൻ പുതിയ കെട്ടിട നിർമ്മാണപദ്ധതിയ്ക്ക് അനുവദിച്ചിരിക്കുന്ന അടങ്കൽ തുക എത്ര കോടി രൂപയാണ്; വ്യക്തമാക്കാമോ;	(എ)	കടുത്തുരുത്തി പോലീസ് സ്റ്റേഷൻ പുതിയ കെട്ടിടത്തിന്റെ നിർമ്മാണത്തിനായി 2025-2026 ലെ പോലീസ് വകുപ്പിന്റെ അധുനികവൽക്കരണത്തിനായുള്ള കേന്ദ്രാവിഷ്കൃത സ്കീമിൽ (ASUMP) ഉൾപ്പെടുത്തി 3.6 കോടി അടങ്കൽ തുകയ്ക്ക് ഭരണാനുമതി നൽകിയിട്ടുണ്ട്.
(ബി)	പുതിയ കെട്ടിട നിർമ്മാണത്തിന്റെ ഡിസൈൻ/ഡ്രാഫ്റ്റ് പ്ലാൻ (ഡി.പി.ആർ.) തയ്യാറായിട്ടുണ്ടോ; ഡി.പി.ആർ-ന്റെ കോപ്പി ലഭ്യമാകുമോ;	(ബി)	പുതിയ കെട്ടിടത്തിന്റെ എസ്റ്റിമേറ്റ്, പ്ലാൻ എന്നിവയുടെ ലഭ്യമായ പകർപ്പ് അനുബന്ധം ആയി ചേർത്തിട്ടുണ്ട്.
(സി)	പുതിയ സ്റ്റേഷന്റെ കെട്ടിട വിസ്തീർണം എത്രയാണ്; ഭൂമിശാസ്ത്ര പരിമിതികൾ പരിഗണിച്ചാണോ പദ്ധതി തയ്യാറാക്കിയിരിക്കുന്നത്; വ്യക്തമാക്കാമോ;	(സി)	പുതിയ സ്റ്റേഷന്റെ കെട്ടിട വിസ്തീർണ്ണം 927.66 ച.മീ ആണ്. ഭൂമിശാസ്ത്ര പരിമിതികൾ പരിഗണിച്ചാണ് പദ്ധതി തയ്യാറാക്കുന്നത്.
(ഡി)	പോലീസ് ക്വാർട്ടേഴ്സ് നിർമ്മാണം പ്രസ്തുത പദ്ധതിയിൽ ഉൾപ്പെടുത്തിയിട്ടുണ്ടോ; ഇല്ലെങ്കിൽ ഉൾപ്പെടുത്തുന്നതിനുള്ള നടപടികൾ സ്വീകരിക്കുമോ;	(ഡി)	പോലീസ് ക്വാർട്ടേഴ്സ് നിർമ്മാണം ഈ പദ്ധതിയിൽ ഉൾപ്പെടുന്നില്ല. ആയതിലേയ്ക്ക് പുതിയ പ്രൊപ്പോസൽ തയ്യാറാക്കുന്നതിനുള്ള നടപടികൾ സംസ്ഥാന പോലീസ് മേധാവി തലത്തിൽ സ്വീകരിച്ചു വരുന്നു.
(ഇ)	പദ്ധതിയുടെ പൂർത്തീകരണ സമയരേഖ (ടൈംലൈൻ) എത്രകാലമാണ്; പദ്ധതി എന്നേക്ക് ആരംഭിക്കാൻ കഴിയുമെന്ന് അറിയിക്കാമോ;	(ഇ)	പദ്ധതിയുടെ പൂർത്തീകരണ സമയരേഖ (ടൈംലൈൻ) 18 മാസമാണ്. താമസംവിനാ പദ്ധതിയുടെ നിർമ്മാണ പ്രവർത്തനങ്ങൾ ആരംഭിക്കുന്നതുമാണ്.
(എഫ്)	പദ്ധതിക്ക് ടെക്നിക്കൽ സാങ്ഷൻ ലഭിച്ചിട്ടുണ്ടോ; ഇല്ലായെങ്കിൽ വിശദീകരണം നൽകാമോ?	(എഫ്)	ടെക്നിക്കൽ സാങ്ഷൻ ലഭിച്ചിട്ടുണ്ട്.

സെക്ഷൻ ഓഫീസർ

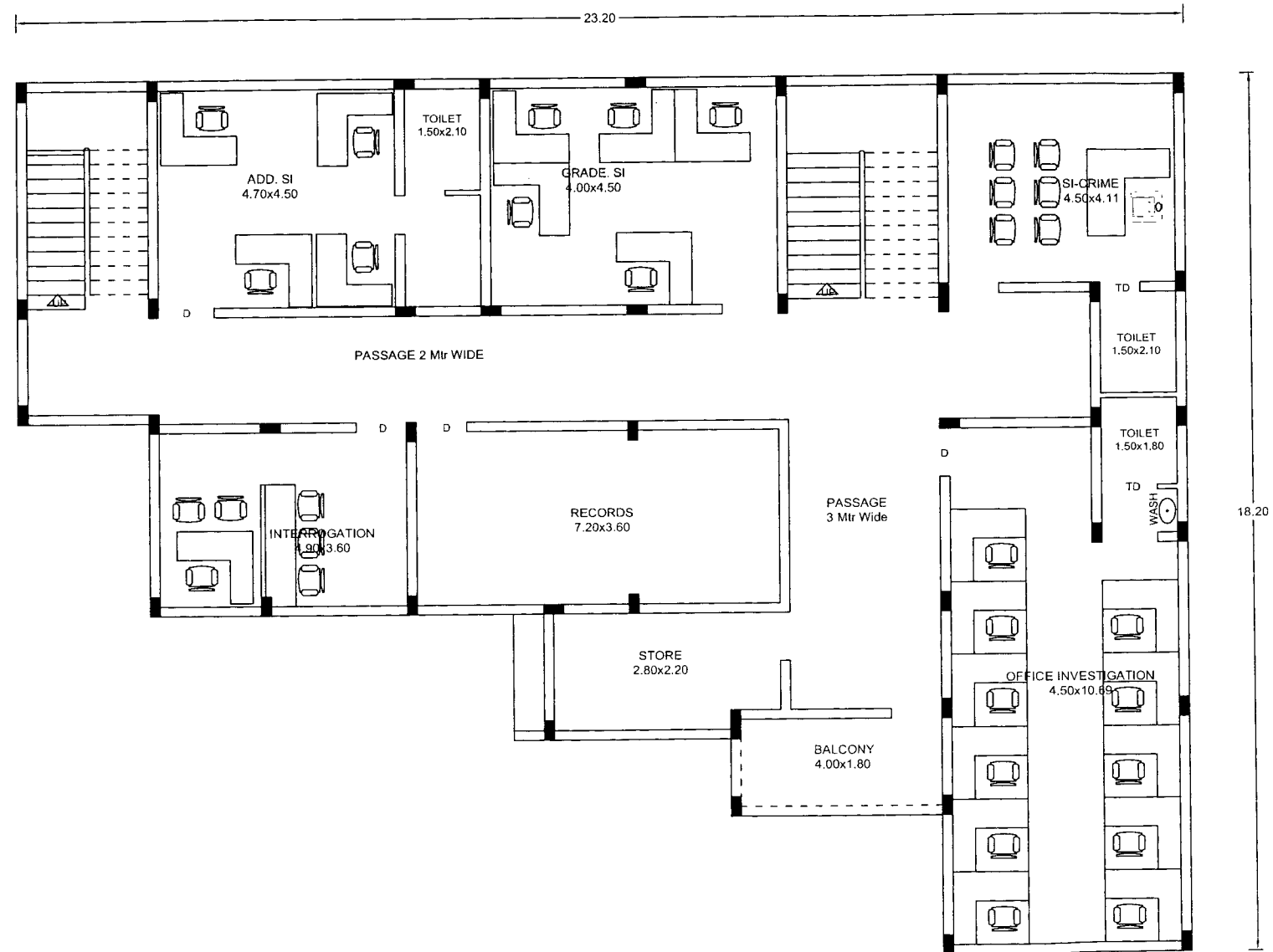
PROPOSED PLAN FOR NEW POLICE STATION AT KADUTHURUTHY - KOTTAYAM



GROUND FLOOR

AREA : 309.22 M2

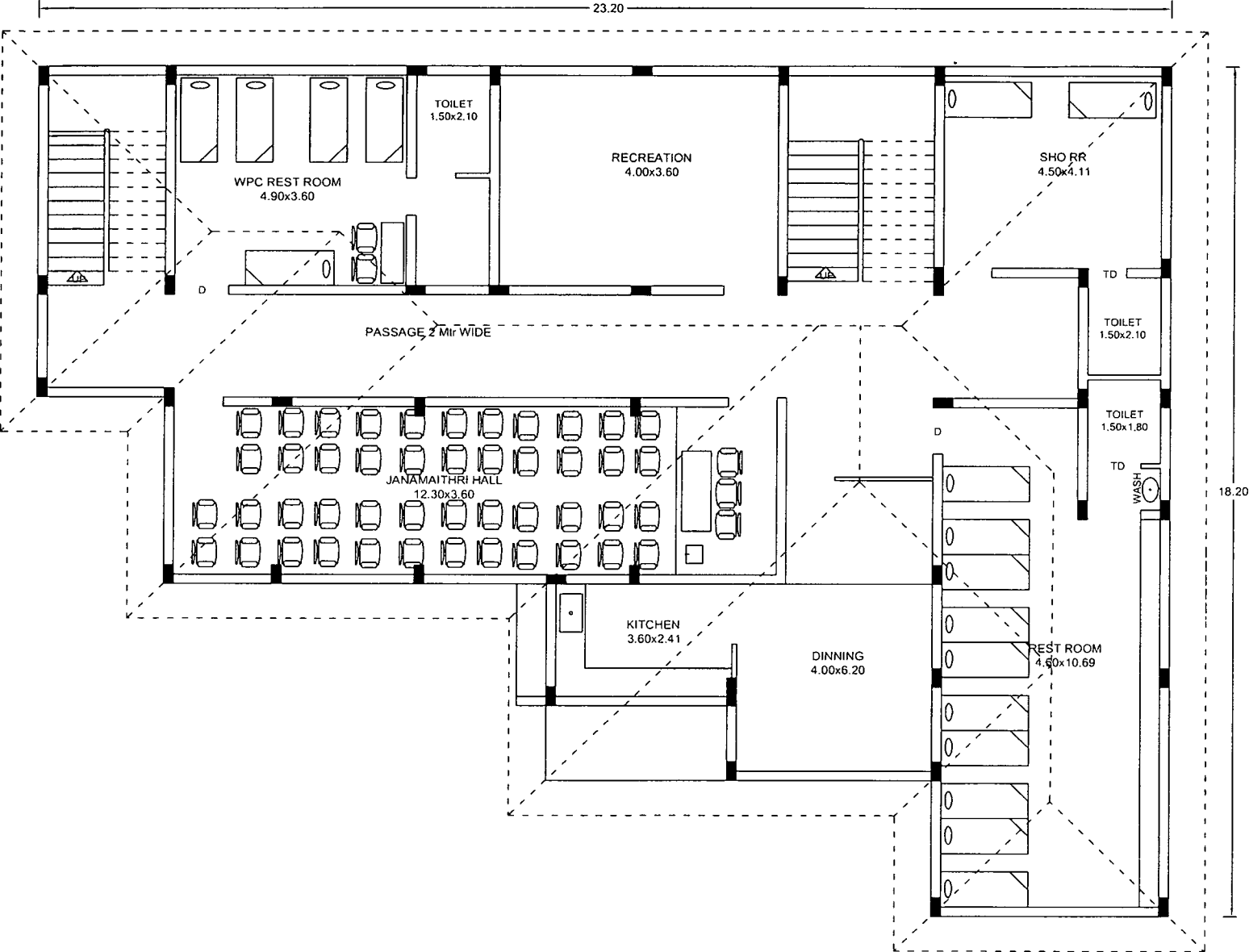
PROPOSED PLAN FOR NEW POLICE STATION AT KADUTHURUTHY - KOTTAYAM



FIRST FLOOR

AREA : 309.22 M2

PROPOSED PLAN FOR NEW POLICE STATION AT KADUTHURUTHY - KOTTAYAM



SECOND FLOOR
AREA : 309.22 M2

EST No. : OEO/KPHCC/EST/3170/2025_5_15_14 (Edit Id : 2)
Cost Index (Place) : Kottayam, GST : 18%

DAR CIVIL DSoR Year : 2021 Cost Index (Value) : 144.45
DAR ELECTRICAL DSoR Year : 2022 Cost Index (Value) : 131.32

ABSTRACT ESTIMATE

GENERAL-District Police chief Kottayam-MoPF Scheme 2025-26 Construction of New Police station at Kaduthuruthy-General Civil Work

SI No	Specification	Quantity	Rate	Amount
1	Civil			
1.001	2.31			
	Clearing jungle including uprooting of rank vegetation, grass, brush wood, trees and saplings of girth up to 30 cm measured at a height of 1 m above ground level and removal of rubbish up to a distance of 50 m outside the periphery of the area cleared			
	Net Total	456.000sqm	@18.19/sqm	8294.64
1.002	OD209800/2025-2026			
	Hydraulic Excavator for JCB			
	Net Total	32.000hour	@1342.23/hour	42951.36
1.003	OD209799/2025-2026			
	Hire and running charges of tipper			
	Net Total	2.000Day	@6291.71/Day	12583.42
1.004	2.8.1			
	Earth work in excavation by mechanical means (Hydraulic excavator) /manual means in foundation trenches or drains (not exceeding 1.5 m in width or 10 sqm on plan), including dressing of sides and ramming of bottoms, lift up to 1.5 m, including getting out the excavated soil and disposal of surplus excavated soil as directed, within a lead of 50 m.All kinds of soil			
	Net Total	480.080cum	@359.72/cum	172694.38
1.005	4.1.8			
	Providing and laying in position cement concrete of specified grade excluding the cost of centering and shuttering - All work up to plinth level:1:4:8 (1 Cement : 4 coarse sand (zone-III) derived from natural sources : 8 graded stone aggregate 40 mm nominal size derived from natural sources)			
	Net Total	46.606cum	@7932.89/cum	369720.27
1.006	7.1.1			
	Random rubble masonry with hard stone in foundation and plinth including levelling up with cement concrete 1:6:12 (1 cement : 6 coarse sand : 12 graded stone aggregate 20 mm nominal size) up to plinth level with:Cement mortar 1:6 (1 cement : 6 coarse sand)			
	Net Total	24.000cum	@8343.49/cum	200243.76

SI No	Specification	Quantity	Rate	Amount
1.007	2.25 Filling available excavated earth (excluding rock) in trenches, plinth, sides of foundation etc. in layers not exceeding 20 cm in depth, consolidating each deposited layer by ramming and watering, lead up to 50 m and lift up to 1.5 m.			
	Net Total	111.482cum	@318.47/cum	35503.67
1.008	50.6.2.2 Solid masonry using pre cast solid blocks (factory made) of size 30x20x15cm or nearest available size confirming to IS 2185 part I of 1979 for super structure up to floor two level with thickness 15cm in : CM 1:6 (1 cement : 6 coarse sand) etc complete			
	Net Total	261.197cum	@7713.54/cum	2014753.51
1.009	21.1.1.3 Providing and fixing aluminium work for doors, windows, ventilators and partitions with extruded built up standard tubular sections/ appropriate Z sections and other sections of approved make conforming to IS : 733 and IS: 1285, fixing with dash fasteners of required dia and size, including necessary filling up the gaps at junctions, i.e. at top, bottom and sides with required EPDM rubber/ neoprene gasket etc. Aluminium sections shall be smooth, rust free, straight, mitred and jointed mechanically wherever required including cleat angle, Aluminium snap beading for glazing /paneling, C.P. brass/ stainless steel screws, all complete as per architectural drawings and the directions of Engineer-in-charge.(Glazing, paneling and dash fasteners to be paid for separately): For fixed portion Polyester powder coated aluminium (minimum thickness of polyester powder coating 50 micron)			
	Net Total	557.969kg	@595.28/kg	332147.79
1.010	21.1.2.2 For shutters of doors, windows & ventilators including providing and fixing hinges / pivots and making provision for fixing of fittings wherever required including the cost of EPDM rubber/ neoprene gasket required (Fittings shall be paid for separately) Powder coated aluminium (minimum thickness of powder coating 50 micron)			
	Net Total	628.000kg	@708.24/kg	444774.72
1.011	21.3.1 Providing and fixing glazing in aluminium door, window, ventilator shutters and partitions etc. with EPDM rubber / neoprene gasket etc. complete as per the architectural drawings and the directions of Engineer - in -Charge. (Cost of aluminium snap beading shall be paid in basic item):With float glass panes of 4.0 mm thickness (weight not less than 10kg/sqm)			
	Net Total	93.450sqm	@1278.82/sqm	119505.73
1.012	21.2.1 Providing and fixing 12 mm thick prelaminated particle board flat pressed three layer or graded wood particle board conforming to IS : 12823 Grade I Type II, in panelling fixed in aluminum doors, windows shutters and partition frames with C.P. brass / stainless steel screws etc. complete as per architectural drawings and directions of Engineer - in- Charge.Pre-laminated particle board with decorative lamination on one			

Sl No	Specification	Quantity	Rate	Amount
	side and balancing lamination on other side			
	Net Total	28.224sqm	@1210.26/sqm	34158.38
1.013	21.3.2			
	Providing and fixing glazing in aluminium door, window, ventilator shutters and partitions etc. with EPDM rubber / neoprene gasket etc. complete as per the architectural drawings and the directions of Engineer - in -Charge. (Cost of aluminium snap beading shall be paid in basic item):With float glass panes of 5.50 mm thickness (weight not less than 12.50 kg/sqm)			
	Net Total	26.829sqm	@1662.26/sqm	44596.77
1.014	9.121			
	Providing and fixing Fiber Glass Reinforced plastic (FRP) Door Frames of cross-section 90 mm x 45 mm having single rebate of 32 mm x 15 mm to receive shutter of 30 mm thickness. The laminated shall be moulded with fire resistant grade unsaturated polyester resin and chopped mat. Door frame laminate shall be 2 mm thick and shall be filled with suitable wooden block in all the three legs. The frame shall be covered with fiber glass from all sides. M.S. stay shall be provided at the bottom to steady the frame.			
	Net Total	91.600metre	@881.06/metre	80705.10
1.015	9.122.1			
	Providing and fixing to existing door frames.30 mm thick Glas Fibre Reinforced Plastic (FRP) panelled door shutter of required colour and approved brand and manufacture, made with fire - retardant grade unsaturated polyester resin, moulded to 3 mm thick FRP laminate for forming hollow rails and styles, with wooden frame and suitable blocks of seasoned wood inside at required places for fixing of fittings, cast monolithically with 5 mm thick FRP laminate for panels conforming to IS : 14856, including fixing to frames.			
	Net Total	32.218sqm	@4384.98/sqm	141275.29
1.016	10.25.1			
	Item Shifted to Sub head 14 as item 14.73 Item Shifted to head 14 as item 14.74 Steel work welded in built up sections/framed work, including cutting, hoisting, fixing in position and applying a priming coat of approved steel primer using structural steel etc. as required.In stringers, treads,landings etc. of stair cases, including use of chequered plate wherever required, all complete			
	Net Total	540.000kg	@128.24/kg	69249.60
1.017	9.55.2			
	Providing and fixing ISI marked IS : 1341 M.S. pressed butt hinges bright finished with necessary screws etc. complete :100x58x1.90mm.			
	Net Total	78.000no	@48.95/no	3818.10
1.018	9.63.3			
	Providing and fixing ISI marked oxidised M.S. tower bolt black finish, (Barrel type) with necessary screws etc. complete : (Copper oxidized as per IS : 1378)150x10 mm			
	Net Total	38.000no	@66.55/no	2528.90

EST No. : OEO/KPHCC/EST/3170/2025_5_15_14 (Edit Id : 2)

Cost Index (Place) : Kottayam, GST : 18%

SI No	Specification	Quantity	Rate	Amount
1.019	9.100.2			
	Providing and fixing aluminium handles, ISI marked, anodised (anodic coating not less than grade AC 10 as per IS : 1868) transparent or dyed to required colour or shade, with necessary screws etc. complete: 100 mm			
	Net Total	32.000no	@66.76/no	2136.32
1.020	9.88			
	Providing and fixing chromium plated brass 100 mm mortice latch and lock with 6 levers and a pair of lever handles of approved quality with necessary screws etc. complete.			
	Net Total	8.000no	@1025.13/no	8201.04
1.021	21.2.2			
	Providing and fixing 12 mm thick prelaminated particle board flat pressed three layer or graded wood particle board conforming to IS : 12823 Grade I Type II, in panelling fixed in aluminum doors, windows shutters and partition frames with C.P. brass / stainless steel screws etc. complete as per architectural drawings and directions of Engineer - in- Charge.Pre- laminated particle board with decorative lamination on both sides			
	Net Total	70.040sqm	@1192.65/sqm	83533.21
1.022	21.11.1			
	Providing and fixing stainless steel (SS 304 grade) adjustable friction window stays of approved quality with necessary stainless steel screws etc. to the side hung windows as per direction of Engineer - in-Charge complete.205 x 19 mm			
	Net Total	10.000no	@367.16/no	3671.60
1.023	5.2.2			
	Reinforced cement concrete work in walls (any thickness), including attached pilasters, buttresses, plinth and string courses, fillets, columns, pillars, piers, abutments, posts and struts etc. up to floor five level excluding cost of centering, shuttering, finishing and reinforcement : 1:1.5:3 (1 cement : 1.5 coarse sand : 3 graded stone aggregate 20 mm nominal size derived from natural sources)			
	Net Total	159.172cum	@12772.18/cum	2032973.43
1.024	5.3			
	Reinforced cement concrete work in beams, suspended floors, roofs, having slope up to 15° landings, balconies, shelves, chajjas, lintels, bands, plain window sills, staircases and spiral stair cases up to floor five level excluding the cost of centering, shuttering, finishing and reinforcement, with 1:1.5:3 (1 cement : 1.5 coarse sand (Zone III) derived from natural sources: 3 graded stone aggregate 20 mm nominal size derived from natural sources).			
	Net Total	157.470cum	@13442.14/cum	2116733.79
1.025	5.5			
	Reinforced cement concrete work in arches, archribs, domes, vaults, shells, folded plate and roofs having slope more than 15 up to floor five level excluding the cost of centering, shuttering, finishing and reinforcement with 1:1.5:3 (1 cement :1.5 coarse sand(Zone III) derived from natural sources : 3 graded stone aggregate 20 mm nominal size derived from natural			

SI No	Specification	Quantity	Rate	Amount
	sources)			
	Net Total	19.320cum	@14159.26/cum	273556.90
1.026	5.9.1			
	Centering and shuttering including strutting, etc. and removal of form for:Foundations, footings, bases of columns, etc for mass concrete			
	Net Total	441.160sqm	@386.16/sqm	170358.35
1.027	5.9.5			
	Centering and shuttering including strutting, etc. and removal of form for:Lintels, beams, plinth beams, girders bressumers and cantilevers			
	Net Total	680.359sqm	@762.88/sqm	519032.27
1.028	5.9.3			
	Centering and shuttering including strutting, etc. and removal of form for:Suspended floors, roofs, landings, balconies and access platform			
	Net Total	1208.120sqm	@961.24/sqm	1161293.27
1.029	5.9.6			
	Centering and shuttering including strutting, etc. and removal of form for:Columns, Pillars, Piers, Abutments, Posts and Struts			
	Net Total	295.200sqm	@1008.55/sqm	297723.96
1.030	5.9.16.1			
	Centering and shuttering including strutting, etc. and removal of form for:Edges of slabs and breaks in floors and wallsUnder 20 cm wide			
	Net Total	597.600metre	@228.13/metre	136330.49
1.031	5.9.13			
	Centering and shuttering including strutting, etc. and removal of form for:Vertical and horizontal fins individually for forming box louvers band, facias and eaves boards			
	Net Total	176.000sqm	@1379.89/sqm	242860.64
1.032	5.9.19			
	Centering and shuttering including strutting, etc. and removal of form for:Weather shade, Chajjas, corbels etc., including edges			
	Net Total	52.320sqm	@1021.94/sqm	53467.90
1.033	5.9.7			
	Centering and shuttering including strutting, etc. and removal of form for:Stairs, (excluding landings) except spiral - staircases)			
	Net Total	24.000sqm	@824.81/sqm	19795.44
1.034	5.9.2			
	Centering and shuttering including strutting, etc. and removal of form for:Walls (any thickness) including attached pilasters, butteresses, plinth and string courses etc.			
	Net Total	313.600sqm	@839.60/sqm	263298.56
1.035	5.22.6			

EST No. : OEO/KPHCC/EST/3170/2025_5_15_14 (Edit Id : 2)
Cost Index (Place) : Kottayam, GST : 18%

Sl No	Specification	Quantity	Rate	Amount
	Steel reinforcement for R.C.C work including straightening, cutting, bending, placing in position and binding all complete upto plinth levelThermo - Mechanically Treated bars of grade Fe-500D or more			
	Net Total	42056.300kilogram	@112.43/kilogram	4728389.81
1.036	13.4.1			
	12 mm cement plaster of mix:1:4 (1 cement : 4 coarse sand)			
	Net Total	3228.241sqm	@385.28/sqm	1243776.69
1.037	13.16.1			
	6 mm cement plaster of mix:1:3 (1 cement: 3 fine sand)			
	Net Total	996.075sqm	@317.31/sqm	316064.56
1.038	13.7.2			
	12 mm cement plaster finished with a floating coat of neat cement of mix:1:4 (1 cement : 4 fine sand)			
	Net Total	75.975sqm	@453.05/sqm	34420.47
1.039	OD216423/2025-2026			
	Providing water cutting on the border of sunshade and roof slab projection in CM1:3,18mm thick and of 25mm wide including watering, curing, cost and conveyance of all materials and labour charges etc. complete			
	Net Total	127.000metre	@198.59/metre	25220.93
1.040	9.48.1			
	Providing and fixing M.S. Grills of required pattern in frames of windows etc. with M.S. flats, square or round bars etc. including priming coat with approved steel primer all complete.Fixed to steel windows by welding			
	Net Total	1342.000kg	@226.96/kg	304580.32
1.041	13.48.1			
	Finishing with Deluxe Multi surface paint system for interiors and exteriors using primer as per manufacturers specifications:Two or more coats applied on walls @ 1.25 ltr/10 sqm over and including one coat of special primer applied @ 0.75 ltr /10 sqm			
	Net Total	4300.291sqm	@199.31/sqm	857091.00
1.042	13.80			
	Providing and applying white cement based putty of average thickness 1 mm, of approved brand and manufacturer, over the plastered wall surface to prepare the surface even and smooth complete.			
	Net Total	1462.380sqm	@155.33/sqm	227151.49
1.043	13.61.1			
	Painting with synthetic enamel paint of approved brand and manufacture to give an even shade:Two or more coats on new work			
	Net Total	68.468sqm	@164.86/sqm	11287.63
1.044	8.31			

Sl No	Specification	Quantity	Rate	Amount
	Providing and fixing 1st quality ceramic glazed wall tiles conforming to IS: 15622 (thickness to be specified by the manufacturer), of approved make, in all colours, shades except burgundy, bottle green, black of any size as approved by Engineer-in-Charge, in skirting, risers of steps and dados, over 12 mm thick bed of cement mortar 1:3 (1 cement : 3 coarse sand) and jointing with grey cement slurry @ 3.3kg per sqm, including pointing in white cement mixed with pigment of matching shade complete.			
	Net Total	166.778sqm	@1333.56/sqm	222408.47
1.045	11.38			
	Providing and laying Ceramic glazed floor tiles of size 300x300 mm (thickness to be specified by the manufacturer), of 1st quality conforming to IS : 15622, of approved make, in all colours, shades, except White, Ivory, Grey, Fume Red Brown, laid on 20 mm thick bed of cement mortar 1:4 (1 cement : 4 Coarse sand), including pointing the joints with white cement and matching pigments etc., complete.			
	Net Total	33.975sqm	@1388.25/sqm	47165.79
1.046	11.40			
	Providing and laying rectified Glazed Ceramic floor tiles of size 300x300 mm or more (thickness to be specified by the manufacturer) of 1st quality conforming to IS: 15622 of approved make in all colours, shades, except white, Ivory, Grey Fume Red Brown, laid on 20 mm thick cement mortar 1:4 (1 Cement : 4 Coarse sand) including pointing the joints with white cement and matching pigments etc., complete.			
	Net Total	339.800sqm	@1536.30/sqm	522034.74
1.047	11.41.2			
	Providing and laying vitrified floor tiles in different sizes (thickness to be specified by the manufacturer) with water absorption less than 0.08% and conforming to IS : 15622, of approved make, in all colours and shades, laid on 20 mm thick cement mortar 1:4(1 cement : 4 coarse sand), including grouting the joints with white cement and matching pigments etc., complete. Size of Tile 600 x 600 mm.			
	Net Total	620.000sqm	@1776.49/sqm	1101423.80
1.048	11.48.2			
	Grouting the joints of flooring tiles having joints of 3 mm width, using epoxy grout mix 0.70 kg of organic coated filler of desired shade (0.10 kg of hardener and 0.20 kg of resin per kg). including filling /grouting and finishing complete as per direction of Engineer-in-charge. Size of Tile 600x600 mm			
	Net Total	1159.000sqm	@324.35/sqm	375921.65
1.049	10.16.2			
	Steel work in built up tubular (round, square or rectangular hollow tubes etc.) trusses etc., including cutting, hoisting, fixing position and applying a priming coat of approved steel primer, including welding and bolted with special shaped washers etc. complete. Hot finished seamless type tubes			
	Net Total	4728.870kg	@211.88/kg	1001952.98
1.050	10.25.2			
	Item Shifted to Sub head 14 as item 14.73 Item Shifted to head 14 as item 14.74 Steel work welded in built up sections/framed work, including cutting, hoisting, fixing in position and applying a priming coat of approved steel primer using			

EST No. : OEO/KPHCC/EST/3170/2025_5_15_14 (Edit Id : 2)
 Cost Index (Place) : Kottayam, GST : 18%

SI No	Specification	Quantity	Rate	Amount
	structural steel etc. as required.In gratings, frames, guard bar, ladder, railings, brackets, gates and similar works			
	Net Total	172.000kg	@178.42/kg	30688.24
1.051	12.50			
	Providing and fixing precoated galvanised iron profile sheets (size, shape and pitch of corrugation as approved by Engineer-in-charge) 0.50 mm (+0.05%), total coated thickness with zinc coating 120 grams per sqm as per IS: 277, in 240 mpa steel grade, 5-7 microns epoxy primer on both side of the sheet and polyester top coat 15-18 microns. Sheet should have protective guard film of 25 microns minimum to avoid scratches during transportation and should be supplied in single length upto 12 metre or as desired by Engineer-in-charge. The sheet shall be fixed using self drilling/self tapping screws of size (5.5x55mm) with EPDM seal, complete upto any pitch in horizontal/ vertical or curved surfaces, excluding the cost of purlins, rafters and trusses and including cutting to size and shape wherever required.			
	Net Total	515.200sqm	@842.14/sqm	433870.53
1.052	12.51.1			
	Providing and fixing precoated galvanised steel sheet roofing accessories 0.50 mm (+0.05 %) total coated thickness, Zinc coating 120 grams per sqm as per IS: 277, in 240 mpa steel grade, 5-7 microns epoxy primer on both side of the sheet and polyester top coat 15-18 microns using self drilling/ self tapping screwscomplete :Ridges plain (500-600 mm)			
	Net Total	108.000metre	@565.05/metre	61025.40
1.053	OD209796/2025-2026			
	Supplying and fixing laminated type PVC door including all fittings area required cost of labour charges etc complete.			
	Net Total	1.000each	@2903.75/each	2903.75
1.054	8.2.2.2			
	Providing and fixing 18 mm thick gang saw cut, mirror, polished, premoulded and prepolished, machine cut for kitchen platforms, vanity counters, window sills, facias and similar locations, of required size, approved shade, colour and texture laid over 20 mm thick base cement mortar 1:4 (1 cement : 4 coarse sand), joints treated with white cement, mixed with matching pigment, epoxy touch ups, including rubbing, curing, moulding and polishing to edges to give high gloss finish etc. complete at all levels.Area of slab over 0.50 sqm			
	Net Total	58.746sqm	@5549.44/sqm	326007.40
1.055	16.91.1			
	Providing and laying factory made chamfered edge Cement Concrete paver blocks in footpath, parks, lawns, drive ways or light traffic parking etc, of required strength, thickness & size/ shape, made by table vibratory method using PU mould, laid in required colour & pattern over 50mm thick compacted bed of sand, compacting and proper embedding/laying of inter locking paver blocks into the sand bedding layer through vibratory compaction by using plate vibrator, filling the joints with sand and cutting of paver blocks as per required size and pattern, finishing and sweeping extra sand. complete all as per direction of Engineer-in-Charge.60mm thick cement concrete paver block of M-35 grade with approved colour, design & pattern.			

SI No	Specification	Quantity	Rate	Amount
	Net Total	540.000sqm	@1169.16/sqm	631346.40
1.056	OD209798/2025-2026			
	Supplying and fixing Ferro cement slab for an almarah including cutting and making all materials conveyance etc. complete.			
	Net Total	54.400sqm	@874.84/sqm	47591.30
1.057	OD209797/2025-2026			
	providing and fixing Cup board for Kitchen and an almarah using aluminium 'J' section and front cover with aluminium composit panel including all fittings lock , auto closer hinges, handle ,colour and material selected by engineer in charge etc complete.			
	Net Total	51.030sqm	@7498.64/sqm	382655.60
1.058	10.28			
	Providing and fixing stainless steel (Grade 304) railing made of Hollow tubes, channels, plates etc., including welding, grinding, buffing, polishing and making curvature (wherever required) and fitting the same with necessary stainless steel nuts and bolts complete, i/c fixing the railing with necessary accessories & stainless steel dash fasteners, stainless steel bolts etc., of required size on the top of the floor or the side of waist slab with suitable arrangement as per approval of Engineer-in-charge, (for payment purpose only weight of stainless steel members shall be considered excluding fixing accessories such as nuts, bolts, fasteners etc.)			
	Net Total	494.000kg	@767.78/kg	379283.32
1.059	22.5			
	Providing and laying water proofing treatment in sunken portion of WCs, bathroom etc., by applying cement slurry mixed with water proofing cement compound consisting of applying : a) First layer of slurry of cement @ 0.488 kg/sqm mixed with water proofing cement compound @ 0.253 kg/sqm. This layer will be allowed to air cure for 4 hours. b) Second layer of slurry of cement @ 0.242 kg /sqm mixed with water proofing cement compound @ 0.126 kg/ sqm. This layer will be allowed to air cure for 4 hours followed with water curing for 48 hours. The rate includes preparation of surface, treatment and sealing of all joints, corners, junctions of pipes and masonry with polymer mixed slurry.			
	Net Total	117.600sqm	@647.84/sqm	76185.98
1.060	12.45.1			
	Providing and fixing false ceiling at all height including providing and fixing of frame work made of special sections, power pressed from M.S. sheets and galvanized with zinc coating of 120 gms/ sqm (both side inclusive) as per IS : 277 and consisting of angle cleats of size 25 mm wide x 1.6 mm thick with flanges of 27 mm and 37 mm, at 1200 mm centre to centre, one flange fixed to the ceiling with dash fastener 12.5 mm dia x 50 mm long with 6 mm dia bolts, other flange of cleat fixed to the angle hangers of 25x10x0.50 mm of required length with nuts & bolts of required size and other end of angle hanger fixed with intermediate G.I. channels 45x15x0.9 mm running at the spacing of 1200 mm centre to centre, to which the ceiling section 0.5 mm thick bottom wedge of 80 mm with tapered flanges of 26 mm each having lips of 10.5 mm, at 450 mm centre to centre, shall be fixed in a direction perpendicular to G.I. intermediate channel with connecting clips made out of 2.64 mm dia x 230 mm long G.I. wire at every junction, including fixing perimeter channels 0.5 mm thick 27 mm			

EST No. : OEO/KPHCC/EST/3170/2025_5_15_14 (Edit Id : 2)
 Cost Index (Place) : Kottayam, GST : 18%

Sl No	Specification	Quantity	Rate	Amount
	high having flanges of 20 mm and 30 mm long, the perimeter of ceiling fixed to wall/partition with the help of rawl plugs at 450 mm centre, with 25 mm long dry wall screws @ 230 mm interval, including fixing of gypsum board to ceiling section and perimeter channel with the help of dry wall screws of size 3.5x25 mm at 230 mm c/c, including jointing and finishing to a flush finish of tapered and square edges of the board with recommended jointing compound, jointing tapes, finishing with jointing compound in 3 layers covering upto 150 mm on both sides of joint and two coats of primer suitable for board, all as per manufacturer's specification and also including the cost of making openings for light fittings, grills, diffusers, cutouts made with frame of perimeter channels suitably fixed, all complete as per drawings, specification and direction of the Engineer in Charge but excluding the cost of painting with: 12.5 mm thick tapered edge gypsum plain board conforming to IS : 2095-Part 1 : 2011 (Board with BIS certification marks)			
	Net Total	132.188sqm	@1437.06/sqm	189962.09
1.061	9.98			
	Providing and fixing aluminium pull bolt lock, ISI marked, anodised (anodic coating not less than grade AC 10 as per IS : 1868), transparent or dyed to required colour and shade, with necessary screws bolts, but nut and washers etc. complete.			
	Net Total	60.000no	@112.74/no	6764.40
1.062	OD216349/2025-2026			
	Supplying and fixing Aluminium composite panel having thickness 3mm colour and design as per direction of Engineer in charge fixed over 25 x 25 Aluminium square tube 1.5mm thick suitable spacing for both direction including cost and conveyance of all materials and labour charges etc complete			
	Net Total	36.000sqm	@2439.15/sqm	87809.40
1.063	25.3			
	Providing, assembling and supplying vision glass panels (IGUs) comprising of hermetically-sealed 6-12- 6 mm insulated glass (double glazed) vision panel units of size and shape as required and specified, comprising of an outer heat strengthened float glass 6mm thick, of approved colour and shade with reflective soft coating on surface # 2 of approved colour and shade, an inner Heat strengthened clear float glass 6mm thick, spacer tube 12mm wide, dessicants, including primary seal and secondary seal (structural silicone sealant) etc. all complete for the required performances, as per the Architectural drawings, as per the approved shop drawings, as specified and as directed by the Engineer-in-Charge. The IGUs shall be assembled in the factory/ workshop of the glass processor. (Payment for fixing of IGU Panels in the curtain glazing is included in cost of item No.26.2) For payment, only the actual area of glass on face # 1 of the glass panels (excluding the areas of the grooves and weather silicone sealant) provided and fixed in position, shall be measured in sqm. (i) Coloured tinted float glass 6mm thick substrate with reflective soft coating on face # 2, + 12mm Airgap + 6mm Heat Strengthened clear Glass of approved make having properties as visible Light transmittance (VLT) of 25 to 35 %, Light reflection internal 10 to 15%, light reflection external 10 to 20 %, shading coefficient (0.25-0.28) and U value of 3.0 to 3.3 W/m2 degree K etc. The properties of performance glass shall be decided by technical sanctioning authority as per the site requirement			
	Net Total	4.000sqm	@4235.42/sqm	16941.68
1.064	OD216351/2025-2026			

SI No	Specification	Quantity	Rate	Amount
	Providing and fixing (V board or similar board) plain sheet as false ceiling 60cmx60cm boards, 4mm thick with GI outer frame of grid ceiling section angle and tee sections required size and the grid suspended from the structural soffit using hanging aluminium/MS section each grid junction rawl plugs and necessary strings, (frame work provision for fixing light points should be made as per the direction of Departmental engineers) etc. including cost and conveyance of all materials and labour charges etc complete.			
	Net Total	279.000sqm	@874.84/sqm	244080.36
1.065	OD216352/2025-2026			
	Providing and fixing good quality imported Horizontal blinds window curtains 100 mm width of fabric with 100% polyester acrylic acid coating with all connecting powder coated aluminium channels, clamp, hook, toin and iron plate (weight) for operating etc complete and as per the direction of the engineer in charge, including cost conveyance of all materials and labour charges etc complete.(Zebra Curtain)			
	Net Total	87.750sqm	@1437.24/sqm	126117.81
1.066	OD216353/2025-2026			
	Supplying and fixing Frame less toughened glass door lock (superior quality)			
	Net Total	2.000each	@1858.40/each	3716.80
1.067	OD216354/2025-2026			
	Supplying and fixing Frame less toughened glass door Handle required size and shape selected by engineer in charge (superior quality)			
	Net Total	2.000set	@2323.00/set	4646.00
1.068	OD216355/2025-2026			
	Supplying and fixing sherra board including all fittings and labour charges etc complete			
	Net Total	20.2001 metre	@232.30/1 metre	4692.46
1.069	OD216356/2025-2026			
	Providing and fixing 200 mm PVC Rain water Gutter, fittings including fixing the pipe with clamps at 1.00 m spacing. This includes jointing of pipes with one step coupling fittings and PVC Solvent cement and testing of joints complete as per direction of Engineer-in-Charge.			
	Net Total	25.200metre	@679.21/metre	17116.09
1.070	4.1.5			
	Providing and laying in position cement concrete of specified grade excluding the cost of centering and shuttering - All work up to plinth level:1:3:6 (1 Cement : 3 coarse sand (zone-III) derived from natural sources : 6 graded stone aggregate 20 mm nominal size derived from natural sources)			
	Net Total	2.835cum	@8569.14/cum	24293.51
1.071	21.18			
	Providing and fixing 12 mm thick frameless toughened glass door shutter of approved brand and manufacture, including providing and fixing top & bottom pivot & double acting hydraulic floor spring type fixing arrangement and making necessary holes etc.			

SI No	Specification	Quantity	Rate	Amount
	for fixing required door fittings, all complete as per direction of Engineer-in-charge (Door handle, lock and stopper etc to be paid separately)			
	Net Total	4.620sqm	@5694.07/sqm	26306.60
1.072	50.12.4.2			
	Providing and fixing false ceiling with 7.5 mm thick PVC wooden grains panel board ceiling of approved quality in aluminium frame work with necessary screws etc complete (aluminium frame work shall be paid separately)			
	Net Total	28.413sqm	@1017.60/sqm	28913.07
1.073	60.7.1			
	DRY RUBBLE MASONRY _ Dry rubble without concrete levelling course masonry with good quality blasted rubble including packing to compactness to lines and levels cost and conveyance of all materials labour charges etc. complete as per direction of Departmental officers at site			
	Net Total	15.120cum	@3993.46/cum	60381.12
			Heading Total(Rs)	25746662.20
2	Water supply and Sanitary			
2.001	17.3.1			
	Providing and fixing white vitreous china pedestal type water closet (European type) with seat and lid, 10 litre low level white vitreous china flushing cistern & C.P. flush bend with fittings & C.I. brackets, 40 mm. flush bend, overflow arrangement with specials of standard make and mosquito proof coupling of approved municipal design complete, including painting of fittings and brackets, cutting and making good the walls and floors wherever required :W.C. pan with ISI marked white solid plastic seat and lid			
	Net Total	6.000each	@8704.43/each	52226.58
2.002	17.1.1			
	Providing and fixing water closet squatting pan (Indian type W.C. pan) with 100 mm Sand Cast Iron P or S trap, 10 litter low level white P.V.C.flushing cistern, including flush pipe, manually controlled device (handle lever) conforming to IS : 7231, with all fittings and fixtures complete, including cutting and making good the walls and floors wherever require:White Vitreous china Orissa pattern W.C. pan of size 580x440 mm with integral type foot rests			
	Net Total	4.000each	@7249.89/each	28999.56
2.003	17.10.2.1			
	Providing and fixing Stainless Steel A ISI 304 (18/8) kitchen sink as per IS 13983 with C.I. brackets and stainless steel plug 40 mm, including painting of fittings and brackets, cutting and making good the walls wherever required: Kitchen sink without drain board610x510 mm bowl depth 200 mm			
	Net Total	1.000each	@5360.15/each	5360.15
2.004	17.13.2			
	Providing and fixing white vitreous china water closet squatting pan (Indian type):Orissa pattern W.C. pan of size 580x440 mm			

Sl No	Specification	Quantity	Rate	Amount
	Net Total	2.000each	@3458.86/each	6917.72
2.005	17.7.4			
	Providing and fixing wash basin with C.I. brackets, 15 mm C.P. brass pillar taps, 32 mm C.P. brass waste of standard pattern, including painting of fittings and brackets, cutting and making good the walls wherever require: White Vitreous China Flat back wash basin size 550x 400 mm with single 15 mm C.P. brass pillar tap			
	Net Total	10.000each	@2106.24/each	21062.40
2.006	17.31			
	Providing and fixing 600x450 mm beveled edge mirror of superior glass (of approved quality) complete with 6 mm thick hard board ground fixed to wooden cleats with C.P. brass screws and washers complete.			
	Net Total	10.000each	@1769.56/each	17695.60
2.007	50.18.7.3.2			
	Providing and fixing PVC pipes, fittings including fixing the pipe with clamps at 1.00 m spacing. This includes jointing of pipes & fittings with one step PVC solvent cement and testing of joints complete as per direction of Engineer-in-Charge 25 mm dia 10Kgf/ cm2- Internal work- Exposed on wall			
	Net Total	68.000metre	@297.31/metre	20217.08
2.008	50.18.8.9.2			
	Providing and fixing PVC pipes, fittings including fixing the pipe with clamps at 1.00 m spacing. This includes jointing of pipes with one step PVC Solvent cement and testing of joints complete as per direction of Engineer-in-Charge. Concealed work, including cutting chases and making good the wall etc. 110 mm pipe 4 kgf/cm2			
	Net Total	47.000metre	@753.62/metre	35420.14
2.009	50.18.9.9.2			
	Providing and fixing PVC pipes includes joints of pipes with one step PVC solvent cement, trenching, refilling & testing of joints complete as per direction of Engineer in CHarge. 110 mm dia 4 Kg/cm2			
	Net Total	65.800metre	@534.11/metre	35144.44
2.010	50.18.9.10.1			
	Providing and fixing PVC pipes includings jointing of pipes with one step pvc solvent cement, trenching , refilling & testing of joints complete as per direction of Engineer in Charge. 150 mm dia 6 Kgf/cm2			
	Net Total	5.000metre	@960.97/metre	4804.85
2.011	50.18.9.18.2			
	Providing and fixing PVC pipes including fixing the pipe with clamps/Clips at 1.00 m spacing. This included jointing of pipes with one step PVC solvent cement and testing of joints complete as per direction of Engineer-in-Charge 75 mm dia 4 Kfg/cm2 - External work - Exposed on wall			
	Net Total	38.400metre	@263.31/metre	10111.10
2.012	50.18.9.22.5			
	Providing and fixing PVC moulded fittings/ accessories for Rigid PVC pipes			

Sl No	Specification	Quantity	Rate	Amount
	including jointing with PVC solvent cement 110x110x110 mm dia Tee			
	Net Total	4,000no	@180.59/no	722.36
2.013	50.18.9.13.2			
	Providing and fixing PVC pipes, fittings including fixing the pipe with clamps at 1.00 m spacing. This includes jointing of pipes & fittings with one step PVC solvent cement and testing of joints complete as per direction of Engineer-in-Charge 25 mm dia 10 Kgf/cm ² - External work - Exposed on wall			
	Net Total	28.800metre	@308.34/metre	8880.19
2.014	50.18.9.14.1			
	Providing and fixing PVC pipes, fittings including fixing the pipe with clamps at 1.00 m spacing. This includes jointing of pipes & fittings with one step PVC solvent cement and testing of joints complete as per direction of Engineer-in-Charge 32 mm dia 10 Kgf/cm ² - External work- Exposed on wall			
	Net Total	86.600metre	@366.18/metre	31711.19
2.015	50.18.9.16.1			
	Providing and fixing PVC pipes, fittings including fixing the pipe with clamps at 1.00 m spacing. This includes jointing of pipes & fittings with one step PVC solvent cement and testing of joints complete as per direction of Engineer-in-Charge 50 mm dia 10Kgf/cm ² - External work - Exposed on wall			
	Net Total	26.000metre	@475.24/metre	12356.24
2.016	50.18.9.17.2			
	Providing and fixing PVC pipes including fixing the pipe with clamps/clips at 1.00 m spacing. This includes jointing of pipes with one step PVC solvent cement and testing of joints complete as per direction of Engineer-in-Charge 63 mm dia 4 Kgf/cm ² - External work - exposed on wall			
	Net Total	45.000metre	@248.67/metre	11190.15
2.017	50.18.9.19.2			
	Providing and fixing PVC pipes including fixing the pipe with clamps/clips at 1.00 m spacing. This includes jointing of pipes with one step PVC solvent cement and testing of joints complete as per direction of Engineer-in-Charge 110 m dia 4 Kgf/cm ² - External work - Exposed on wall			
	Net Total	44.400metre	@354.77/metre	15751.79
2.018	50.18.9.22.1			
	Providing and fixing PVC moulded fittings/ accessories for Rigid PVC pipes, including jointing with PVC solvent cement - 110 mm dia Elbow			
	Net Total	10.000no	@113.14/no	1131.40
2.019	50.18.9.22.2			
	Providing and fixing PVC moulded fittings / accessories for Rigid PVC pipes, including jointing with PVC solvent cement - 110 mm dia 45 degree Elbow			
	Net Total	8.000no	@110.81/no	886.48
2.020	50.18.9.22.4			
	Providing and fixing PVC moulded fittings/ accessories for Rigid PVC pipes,			

Sl No	Specification	Quantity	Rate	Amount
	including jointing with PVC solvent cement- 110 mm dia Bend			
	Net Total	3.000no	@166.57/no	499.71
2.021	50.18.9.22.6			
	Providing and fixing PVC moulded fittings/accessories for Rigid PVC pipes, including jointing with PVC solvent cement - 110x110x110 mm dia Door tee			
	Net Total	4.000no	@193.36/no	773.44
2.022	50.18.9.22.8			
	Providing and fixing PVC moulded fittings /accessories for Rigid PVC pipes, including jointing with PVC solvent cement -110 mm dia Vent cowl			
	Net Total	4.000no	@129.40/no	517.60
2.023	18.53.1			
	Providing and fixing C.P. brass angle valve for basin mixer and geyser points of approved quality conforming to IS: 893115 mm nominal bore			
	Net Total	30.000each	@627.46/each	18823.80
2.024	18.54.1			
	Providing and fixing PTMT bib cock of approved quality and colour.15 mm nominal bore, 86 mm long, weighing not less than 88 gms			
	Net Total	2.000each	@137.73/each	275.46
2.025	18.62.2			
	Providing and fixing PTMT Ball cock of approved quality, colour and make complete with Epoxy coated aluminium rod with L.P / H.P.H.D plastic ball.20 mm nominal bore, 120 mm long, weighing not less than 198 gms			
	Net Total	5.000each	@280.28/each	1401.40
2.026	18.62.3			
	Providing and fixing PTMT Ball cock of approved quality, colour and make complete with Epoxy coated aluminium rod with L.P / H.P.H.D plastic ball.25 mm nominal bore, 152 mm long, weighing not less than 440 gms			
	Net Total	4.000no	@576.07/no	2304.28
2.027	18.62.4			
	Providing and fixing PTMT Ball cock of approved quality, colour and make complete with Epoxy coated aluminium rod with L.P / H.P.H.D plastic ball.40 mm nominal bore, 206 mm long, weighing not less than 690 gms			
	Net Total	2.000each	@819.33/each	1638.66
2.028	18.76.1			
	Cutting holes up to 30x30 cm in walls including making good the same:With common burnt clay F.P.S. (non modular) brick			
	Net Total	10.000no	@454.48/no	4544.80
2.029	18.77			
	Cutting holes up to 15x15 cm in R.C.C. floors and roofs for passing drain pipe etc. and repairing the hole after insertion of drain pipe etc. with cement concrete 1:2:4 (1 cement : 2 coarse sand: 4 graded stone aggregate 20 mm nominal size), including			

EST No. : OEO/KPHCC/EST/3170/2025_5_15_14 (Edit Id : 2)
 Cost Index (Place) : Kottayam, GST : 18%

SI No	Specification	Quantity	Rate	Amount
	finishing complete so as to make it leak proof.			
	Net Total	31.000no	@472.90/no	14659.90
2.030	50.18.7.4.1			
	Providing and fixing PVC pipes, fittings including fixing the pipe with clamps at 1.00 m spacing. This includes jointing of pipes & fittings with one step PVC solvent cement and testing of joints complete as per direction of Engineer-in-Charge 32 mm dia 10Kgf/cm2- Internal work - Exposed on wall			
	Net Total	41.000metre	@355.17/metre	14561.97
2.031	50.18.7.6.2			
	Providing and fixing PVC pipes, fittings including fixing the pipe with clamps at 1.00 m spacing . This includes jointing of pipes & fittings with one step PVC solvent cement and testing of joints complete as per direction of Engineer-in-Charge 50 mm dia 6 Kgf/cm2 - Internal work- Exposed on wall			
	Net Total	34.000metre	@424.14/metre	14420.76
2.032	50.18.8.3.2			
	Providing and fixing PVC pipes, fittings including fixing the pipe with clamps at 1.00 m spacing. This includes jointing of pipes & fittings with one step PVC solvent cement and testing of joints complete as per direction of Engineer-in-Charge. Concealed work, including cutting chases and making good the wall etc. 25 mm pipe 10kgf/cm2			
	Net Total	27.000metre	@481.78/metre	13008.06
2.033	50.18.8.6.2			
	Providing and fixing PVC pipes, fittings including fixing the pipe with clamps at 1.00 m spacing. This includes jointing of pipes & fittings with one step PVC solvent cement and testing of joints complete as per direction of Engineer-in-Charge. Concealed work, including cutting chases and making good the wall etc. 50 mm pipe 6 kgf/cm2			
	Net Total	26.000metre	@499.91/metre	12997.66
2.034	50.18.8.7.2			
	Providing and fixing PVC pipes, fittings including fixing the pipe with clamps at 1.00 m spacing. This includes jointing of pipes with one step PVC solvent cement and testing of joints complete as per direction of Engineer-in-Charge. Concealed work, including cutting chases and making good the wall etc 63 mm pipe 4 kgf/ cm2			
	Net Total	28.000metre	@647.52/metre	18130.56
2.035	50.18.9.16.2			
	Providing and fixing PVC pipes, fittings including fixing the pipe with clamps at 1.00 m spacing. This includes jointing of pipes & fittings with one step PVC solvent cement and testing of joints complete as per direction of Engineer-in-Charge 50 mm dia 6Kgf/cm2 - External work - Exposed on wall			
	Net Total	24.000metre	@435.17/metre	10444.08
2.036	50.18.9.22.3			
	Providing and fixing PVC moulded fittings/ accessories for Rigid PVC pipes, including jointing with PVC solvent cement-110 mm dia Door Elbow			

SI No	Specification	Quantity	Rate	Amount
	Net Total	6.000no	@137.53/no	825.18
2.037	50.18.9.3.2			
	Providing and fixing PVC pipes includes jointing of pipes with one step PVC solvent cement, trenching, refilling & testing of joints complete as per direction of Engineer in Charge. 25 mm dia 10KGF/cm2			
	Net Total	29.000metre	@249.80/metre	7244.20
2.038	50.18.9.4.1			
	Providing and fixing PVC pipes includings jointing of pipes with one step PVC solvent cement, trenching, refilling & testing of joints complete as per direction of Engineer in Charge.32 mm dia 10.Kgf/cm2			
	Net Total	31.000metre	@272.50/metre	8447.50
2.039	50.18.9.6.2			
	Providing and fixing PVC pipes includings jointing of pipes with one step PVC solvent cement, trenching, refilling & testing of joints complete as per direction of Engineer in Charge. 50 mm dia 6 Kgf/cm2			
	Net Total	19.000metre	@279.75/metre	5315.25
2.040	50.18.9.7.2			
	Providing and fixing PVC pipes includings jointing of pipes with one step PVC solvent cement, trenching, refilling & testing of joints complete as per direction of Engineer in Charge.63 mm dia 4 Kgf/cm2			
	Net Total	22.000metre	@348.37/metre	7664.14
2.041	18.17.1			
	Providing and fixing gun metal gate valve with C.I. wheel of approved quality (screwed end) :25 mm nominal bore			
	Net Total	8.000each	@667.55/each	5340.40
2.042	18.32.1			
	Constructing masonry chamber 30x30x50 cm inside, in brick work in cement mortar 1:4 (1 cement : 4 coarse sand) for stop cock, with C.I. surface box 100x100x75 mm (inside) with hinged cover fixed in cement concrete slab 1:2:4 mix (1 cement : 2 coarse sand: 4 graded stone aggregate 20 mm nominal size), i/c necessary excavation, foundation concrete 1:5:10 (1 cement : 5 fine sand : 10 graded stone aggregate 40 mm nominal size) and inside plastering with cement mortar 1:3 (1 cement : 3 coarse sand) 12 mm thick, finished with a floating coat of neat cement complete as per standard design:With common burnt clay F.P.S (non modular) bricks of class designation 7.5			
	Net Total	8.000each	@2147.03/each	17176.24
2.043	18.51.1			
	Providing and fixing C.P. brass long body bib cock of approved quality conforming to IS standards and weighing not less than 690 gms.15 mm nominal bore			
	Net Total	14.000each	@888.37/each	12437.18
2.044	18.65			
	Providing and fixing PTMT Soap Dish Holder having length of 138 mm, breadth 102			

EST No. : OEO/KPHCC/EST/3170/2025_5_15_14 (Edit Id : 2)
 Cost Index (Place) : Kottayam, GST : 18%

SI No	Specification	Quantity	Rate	Amount
	mm, height of 75 mm with concealed fittings arrangements, weighing not less than 106 gms.			
	Net Total	17.000each	@121.35/each	2062.95
2.045	50.17.1.4			
	Supplying and fixing CP Health faucet good quality including cost of materials and labour charges etc. complete as per the direction of site engineer-in-charge.			
	Net Total	10.000no	@758.53/no	7585.30
2.046	50.17.1.3			
	Supplying and fixing CP Towel rod 60cm or nearest available length including cost of materials and labour charges etc complete as per the direction of site Engineer-in-charge.			
	Net Total	10.000no	@129.07/no	1290.70
2.047	19.28.1			
	Constructing brick masonry road gully chamber 45x45x77.5 cm with bricks in cement mortar 1:4 (1 cement:4 coarse sand) with pre -cast R.C.C vertical grating complete as per standard design:With common burnt clay F.P.S (non modular) bricks of class designation 7.5			
	Net Total	1.000each	@7847.90/each	7847.90
2.048	19.33			
	Constructing soak pit 1.20x1.20 m filled with brickbats including S.W. drain pipe 100 mm diameter and 1.20 m long complete as per standard design.			
	Net Total	2.000each	@3687.19/each	7374.38
2.049	OD209786/2025-2026			
	Supplying and fixing Floor Trap			
	Net Total	10.000each	@193.97/each	1939.70
2.050	18.48			
	Providing and placing on terrace (at all floor levels) polyethylene water storage tank :ISI 12701 marked, with cover and suitable locking arrangement and making necessary holes for inlet, outlet and overflow pipes but without fittings and the base support for tank.			
	Net Total	4000.000Litre	@12.15/Litre	48600.00
2.051	OD209785/2025-2026			
	Supplying and fixing 1500mm dia RCC ring to the thickness of 5cm thick and 30cm height with CC 1:2:4 using 20mm size hard granite broken stones for soakpit to drainage etc.complete.			
	Net Total	12.000each	@2090.70/each	25088.40
2.052	17.9.1			
	Providing and fixing kitchen sink with C. I brackets, C.P. brass chain with rubber plug, 40 mm C.P brass waste complete, including painting the fittings and brackets, cutting and making good the walls wherever required:White glazed fire clay kitchen sink of size 600x450x250 mm			

SI No	Specification	Quantity	Rate	Amount
	Net Total	8.000each	@4141.90/each	33135.20
	Heading Total(Rs)			648966.18
3	Electrical works			
3.001	1.10.1			
	Wiring for light point/ fan point/ exhaust fan point/ call bell point with 1.5 sq.mm FRLS PVC insulated copper conductor single core cable in surface / recessed medium class PVC conduit, with modular switch, modular plate, suitable GI box and earthing the point with 1.5 sq.mm. FRLS PVC insulated copper conductor single core cable etc as required.Group A			
	Net Total	40.000point	@1169.25/point	46770.00
3.002	1.10.2			
	Wiring for light point/ fan point/ exhaust fan point/ call bell point with 1.5 sq.mm FRLS PVC insulated copper conductor single core cable in surface / recessed medium class PVC conduit, with modular switch, modular plate, suitable GI box and earthing the point with 1.5 sq.mm. FRLS PVC insulated copper conductor single core cable etc as required.Group B			
	Net Total	30.000point	@1360.99/point	40829.70
3.003	1.10.3			
	Wiring for light point/ fan point/ exhaust fan point/ call bell point with 1.5 sq.mm FRLS PVC insulated copper conductor single core cable in surface / recessed medium class PVC conduit, with modular switch, modular plate, suitable GI box and earthing the point with 1.5 sq.mm. FRLS PVC insulated copper conductor single core cable etc as required.Group C			
	Net Total	84.000point	@1689.22/point	141894.48
3.004	1.11			
	Wiring for twin control light point with 1.5 sq.mm FRLS PVC insulated copper conductor single core cable in surface / recessed medium class PVC conduit, 2 way modular switch, modular plate, suitable GI box and earthing the point with 1.5 sq.mm. FRLS PVC insulated copper conductor single core cable etc as required.			
	Net Total	14.000point	@1799.04/point	25186.56
3.005	1.17.1			
	Supplying and drawing following sizes of FRLS PVC insulated copper conductor, single core cable in the existing surface / recessed steel/ PVC conduit as required.1 x 1.5 sq. mm			
	Net Total	120.000metre	@51.31/metre	6157.20
3.006	1.14.10			
	Wiring for circuit/ submain wiring alongwith earth wire with the following sizes of FRLS PVC insulated copper conductor, single core cable in surface / recessed			

SI No	Specification	Quantity	Rate	Amount
	medium class PVC conduit as required 4 X 10 sq. mm + 2 X 6 sq. mm earth wire			
	Net Total	23.400metre	@1157.17/metre	27077.78
3.007	1.17.2			
	Supplying and drawing following sizes of FRLS PVC insulated copper conductor, single core cable in the existing surface / recessed steel/ PVC conduit as required. 2 x 1.5 sq. mm			
	Net Total	115.000metre	@80.42/metre	9248.30
3.008	1.17.22			
	Supplying and drawing following sizes of FRLS PVC insulated copper conductor, single core cable in the existing surface / recessed steel/ PVC conduit as required. 4 x 4 sq. mm			
	Net Total	220.000metre	@316.11/metre	69544.20
3.009	1.18.2			
	Supplying and drawing following pair 0.5 mm dia FRLS PVC insulated annealed copper conductor, unarmored telephone cable in the existing surface/ recessed steel/ PVC conduit as required. 2 Pair			
	Net Total	110.000metre	@43.22/metre	4754.20
3.010	1.53.1			
	Supplying and drawn of UTP 4 pair CAT 6 LAN cable in the existing surface/recessed steel/PVC conduit as required 1 run of Cable			
	Net Total	452.000metre	@66.17/metre	29908.84
3.011	1.55.1			
	Wiring for group controlled (looped) light point/fan point/exhaust fan point/ call bell point (without independent switch etc.) with 1.5 sq. mm FRLS PVC insulated copper conductor single core cable in surface/ recessed PVC conduit, and earthing the point with 1.5 sq. mm FRLS PVC insulated copper conductor single core cable etc. as required. Group A			
	Net Total	14.000point	@747.11/point	10459.54
3.012	1.17.3			
	Supplying and drawing following sizes of FRLS PVC insulated copper conductor, single core cable in the existing surface / recessed steel/ PVC conduit as required. 3 X 1.5 sq. mm			
	Net Total	800.000metre	@109.53/metre	87624.00
3.013	1.17.12			
	Supplying and drawing following sizes of FRLS PVC insulated copper conductor, single core cable in the existing surface / recessed steel/ PVC conduit as required. 3 x 2.5 sq. mm			
	Net Total	720.000metre	@158.06/metre	113803.20
3.014	1.17.21			
	Supplying and drawing following sizes of FRLS PVC insulated copper conductor, single core cable in the existing surface / recessed steel/ PVC conduit as required. 3 x 4 sq. mm			

Sl No	Specification	Quantity	Rate	Amount
	Net Total	1090.000metre	@237.10/metre	258439.00
3.015	1.21.1			
	Supplying and fixing of following sizes of medium class PVC conduit along with accessories in surface/ recess including cutting the wall and making good the same in case of recessed conduit as required.20 mm			
	Net Total	1560.000metre	@147.76/metre	230505.60
3.016	1.25			
	Supplying and fixing two module stepped type electronic fan regulator on the existing modular plate switch box including connections but excluding modular plate etc. as required.			
	Net Total	22.000each	@424.29/each	9334.38
3.017	1.27.1			
	Supplying and fixing following size/ modules, GI box alongwith modular base & cover plate for modular switches in recess etc as required.1 or 2 Module (75mmX75mm)			
	Net Total	15.000each	@343.44/each	5151.60
3.018	1.31			
	Supplying and fixing suitable size GI box with modular plate and cover in front on surface or in recess, including providing and fixing 3 pin 5/6 amps modular socket outlet and 5/6 amps modular switch, connection etc. as required. (For light plugs to be used in non residential buildings).			
	Net Total	33.000each	@549.31/each	18127.23
3.019	1.32			
	Supplying and fixing suitable size GI box with modular plate and cover in front on surface or in recess, including providing and fixing 6 pin 5/6 & 15/16 amps modular socket outlet and 15/16 amps modular switch, connection etc. as required.			
	Net Total	21.000each	@674.38/each	14161.98
3.020	1.33			
	Supplying and fixing 3 pin, 5 amp ceiling rose on the existing junction box/ wooden block including connection etc as required.			
	Net Total	23.000each	@99.80/each	2295.40
3.021	1.56			
	Supplying and fixing suitable size GI box with modular plate and cover in front on surface or in recess, including providing and fixing 2 Nos. 3 pin 5/6 A modular socket outlets and 2 Nos. 5/6 A modular switches, connection etc. as required. (For light plugs to be used in non residential buildings).			
	Net Total	32.000each	@782.68/each	25045.76
3.022	2.3.2			
	Supplying and fixing following way, single pole and neutral, sheet steel, MCB distribution board, 240 volts, on surface/ recess, complete with tinned copper			

Sl No	Specification	Quantity	Rate	Amount
	bus bar, neutral bus bar, earth bar, din bar, interconnections, powder painted including earthing etc. as required. (But without MCB/RCCB/Isolator) 8 way, Double door			
	Net Total	3.000each	@2962.61/each	8887.83
3.023	2.10.1			
	Supplying and fixing 5A to 32 A rating, 240/415 volts, 10 kA, ""C"" curve, miniature circuit breaker suitable for inductive load of following poles in the existing MCB DB complete with connections, testing and commissioning etc. as required. Single pole			
	Net Total	52.000each	@294.66/each	15322.32
3.024	2.12.1			
	Supplying and fixing following rating, double pole, 240 volts, isolator in the existing MCB DB complete with connections, testing and commissioning etc. as required.40 amps			
	Net Total	6.000each	@500.57/each	3003.42
3.025	2.14.2			
	Supplying and fixing following rating, double pole, (single phase and neutral),240 volts, residual current circuit breaker (RCCB), having a sensitivity current 30 milli amperes in the existing MCB DB complete with connections, testing and commissioning etc. as required. 40 amps			
	Net Total	6.000each	@3042.51/each	18255.06
3.026	90.4.1			
	Supply and installation of suitable size MS rod type fan clamp in the RCC slab as per IS 732 as required.			
	Net Total	22.000each	@187.04/each	4114.88
3.027	90.4.5.4			
	Supply, Installation, testing and commissioning of ceiling fan of following sizes including wiring the down rods of standard length (up to 30 cm) with 1.5 sq. mm FRLS PVC insulated, copper conductor, single core cable etc. as required. 1200mm sweep - ceiling fan complete with service value minimum 4.0(cub meter/minute/Watt), Air delivery minimum 210(cubic meter/minute), Copper winding suitable for 230V/240V single phase AC supply			
	Net Total	18.000each	@2244.96/each	40409.28
3.028	OD209789/2025-2026			
	Supply, conveyance, installation, testing and commissioning of 1. HP Submersible Pump set with all accessories			
	Net Total	1.000each	@15033.48/each	15033.48
3.029	OD209792/2025-2026			
	Supplying , installation testing and commissioning of 225 mm metal exhaust fan			
	Net Total	7.000each	@1457.45/each	10202.15
3.030	OD209787/2025-2026			

Sl No	Specification	Quantity	Rate	Amount
	Supply and fixing of 50W led flood light with all accessories,electrical connections.including fixing materials required. make-philips/wipro/havells or KPHCC approval list item			
	Net Total	2.000each	@3548.75/each	7097.50
3.031	OD209795/2025-2026			
	od Supply and fixing of 6W 12V led strip 5mtr indoor light . model-LS2835 with driver KPHCC approval make,giving connections etc complete as required.			
	Net Total	3.000each	@1165.95/each	3497.85
3.032	OD209794/2025-2026			
	Supply and fixing of 3w WH outdoor wall light 3000K .including all accessories as required for complete installation (wipro/luker/equivalent)			
	Net Total	10.000each	@1038.19/each	10381.90
3.033	OD209791/2025-2026			
	Supply installation testing and commissioning of 3 W led recessed mount light with all accessories,electrical connections.including fixing materials required. make-philips/wipro/havells KPHCC approval list item			
	Net Total	24.000each	@422.04/each	10128.96
3.034	OD209790/2025-2026			
	Supply installation testing and commissioning of 6 W led recessed mount light with all accessories,electrical connections.including fixing materials required. make-philips/wipro/havells or KPHCC approval list item			
	Net Total	24.000each	@640.40/each	15369.60
3.035	OD209793/2025-2026			
	Supply installation testing and commissioning of 12W led recessed mount light with all accessories,electrical connections.including fixing materials required. philips/wipro/havells or KPHCC approval list			
	Net Total	36.000each	@811.73/each	29222.28
3.036	OD209788/2025-2026			
	Supplying and fixing LED Tube light 4 feet			
	Net Total	35.000each	@232.30/each	8130.50
3.037	1.17.30			
	Supplying and drawing following sizes of FRLS PVC insulated copper conductor, single core cable in the existing surface / recessed steel/ PVC conduit as required.3 x 6 sq. mm			
	Net Total	40.000metre	@350.09/metre	14003.60
3.038	1.17.31			
	Supplying and drawing following sizes of FRLS PVC insulated copper conductor, single core cable in the existing surface / recessed steel/ PVC conduit as required.4 x 6 sq. mm			
	Net Total	44.000metre	@463.09/metre	20375.96
3.039	1.21.2			

SI No	Specification	Quantity	Rate	Amount
	Supplying and fixing of following sizes of medium class PVC conduit along with accessories in surface/ recess including cutting the wall and making good the same in case of recessed conduit as required.25 mm			
	Net Total	184.000metre	@166.58/metre	30650.72
3.040	1.23.8			
	Supplying and fixing following piano type switch / socket on the existing switch box/ cover including connections etc. as required.Bell push			
	Net Total	6.000each	@95.54/each	573.24
3.041	1.24.3			
	Supplying and fixing following modular switch/ socket on the existing modular plate & switch box including connections but excluding modular plate etc. as required.15/16 amp switch			
	Net Total	9.000each	@179.42/each	1614.78
3.042	1.38			
	Supplying and fixing call bell/ buzzer suitable for single phase, 230 volts, complete as required.			
	Net Total	3.000each	@114.24/each	342.72
3.043	1.54.1			
	Wiring for group controlled (looped) light point/fan point/exhaust fan point/ call bell point (without independent switch etc.) with 1.5 sq. mm FRLS PVC insulated copper conductor single core cable in surface/ recessed steel conduit, and earthing the point with 1.5 sq. mm FRLS PVC insulated copper conductor single core cable etc. as required.Group A			
	Net Total	20.000point	@894.59/point	17891.80
3.044	1.58			
	Supplying and fixing PVC batten/ angle holder including connection etc. as required.			
	Net Total	34.000each	@126.42/each	4298.28
3.045	2.3.3			
	Supplying and fixing following way, single pole and neutral, sheet steel, MCB distribution board, 240 volts, on surface/ recess, complete with tinned copper bus bar, neutral bus bar, earth bar, din bar, interconnections, powder painted including earthing etc. as required. (But without MCB/RCCB/Isolator) 12 way, Double door			
	Net Total	1.000each	@2665.18/each	2665.18
3.046	2.3.4			
	Supplying and fixing following way, single pole and neutral, sheet steel, MCB distribution board, 240 volts, on surface/ recess, complete with tinned copper bus bar, neutral bus bar, earth bar, din bar, interconnections, powder painted including earthing etc. as required. (But without MCB/RCCB/Isolator) 16 way, Double door			
	Net Total	1.000each	@3616.96/each	3616.96
3.047	2.11			

SI No	Specification	Quantity	Rate	Amount
	Supplying and fixing single pole blanking plate in the existing MCB DB complete etc. as required.			
	Net Total	10.000each	@14.42/each	144.20
3.048	2.13.2			
	Supplying and fixing following rating, four pole, 415 volts, isolator in the existing MCB DB complete with connections, testing and commissioning etc. as required.63 amps			
	Net Total	4.000each	@1190.26/each	4761.04
3.049	2.14.1			
	Supplying and fixing following rating, double pole, (single phase and neutral),240 volts, residual current circuit breaker (RCCB), having a sensitivity current 30 milli amperes in the existing MCB DB complete with connections, testing and commissioning etc. as required. 25 amps			
	Net Total	1.000each	@2334.78/each	2334.78
3.050	2.15.1			
	Supplying and fixing following rating, four pole, (three phase and neutral), 415 volts, residual current circuit breaker (RCCB), having a sensitivity current 30 milli Amperes in the existing MCB DB complete with connections, testing and commissioning etc. as required. 25 amps			
	Net Total	4.000each	@2977.89/each	11911.56
3.051	5.4			
	Earthing with G.I. earth plate 600 mm X 600 mm X 6 mm thick including accessories, and providing masonry enclosure with cover plate having locking arrangement and watering pipe of 2.7 metre long etc. with charcoal/ coke and salt as required.			
	Net Total	2.000set	@8603.47/set	17206.94
3.052	90.10.3.15			
	Supply and Fixing the following modular switches & accessories in the existing front plates and giving necessary connections as required (RoHS compliant)32A DP switch with indicator			
	Net Total	4.000each	@570.40/each	2281.60
3.053	90.11.1.11			
	Supply and installation of sheet steel, phosphatised and painted, dust and vermin proof enclosure of MCB DB including copper /brass bus bar, neutral link, earth bus and DIN rail suitable for fixing MCB/ isolator etc. fixed on wall using suitable anchor bolts or fixed in recess including cutting hole on the wall , making good the damages, colour washing etc. as required6 way (8+18) - three phase double cover (IP 42/43)			
	Net Total	1.000each	@4565.19/each	4565.19
3.054	90.16.1.3			
	Supply and drawing bare earthing conductors of the following sizes along with			

SI No	Specification	Quantity	Rate	Amount
	wiring/ cables and giving connection as required 3.15 mm copper conductor (10 SWG)			
	Net Total	26.000metre	@66.57/metre	1730.82
3.055	90.16.5.3			
	Supply of superior quality copper earth socket for the following size of earth conductor including crimping etc. as required. 3.15 mm (10 SWG)			
	Net Total	8.000each	@29.97/each	239.76
3.056	OD216365/2025-2026			
	Supply and fixing of RJ 45 connector			
	Net Total	46.000each	@36.94/each	1699.24
3.057	OD216368/2025-2026			
	Supply and fixing of Netrack 4U 400D rack , shelf-1, 6socket /5A pdu-1 and 20 hardware screws .make-Netrack/valrack/equivalent			
	Net Total	1.000each	@3783.24/each	3783.24
3.058	OD216369/2025-2026			
	Fabrication, supply & installation of dust and vermin proof, wall mounting, three phase Meter Box of suitable for fixing KSEB meter, fuse units, CT etc, hinged door construction for the front side with compartments if necessary, providing vision panel for the meter compartment, knock out for cable entry and exit with the following. 63A, 415V Fuse- 3 Nos, 63A ,415V ,Neutral Link- 1 No, 63A TPN SFU- 1No, 63A HRC Link - 1 No			
	Net Total	1.000set	@14223.09/set	14223.09
3.059	OD216370/2025-2026			
	Supply ,installation ,testing and commissioning of 18W LED focus light of departmental approved make, giving connection et complete as required			
	Net Total	2.000each	@1453.84/each	2907.68
3.060	OD216372/2025-2026			
	Supply and providing 200mm size exhaust fan with adjustable upward and downward tilt mechanism, aerodynamically designed and blanced balde with rate speed of 1350 revolution per minute ,air delivery of 520m3/h ,Noise Level- 42 dB, operating on 230V, 50 Hz rated voltage and frequency. (Model; Havells Ventilair DX or equivalent)			
	Net Total	4.000each	@1623.13/each	6492.52
3.061	OD216376/2025-2026			
	Supply ,installation ,testing and commissioing of Netrack 6U rack with shelf-1, 6socket /5A pdu-1, 20 hardware screws and closed type cable manager-1.make-Netrack/valrack/equivalent			
	Net Total	1.000each	@8100.28/each	8100.28
3.062	OD216377/2025-2026			
	Supply ,installation ,testing and commissioing of CAT6 patch cord 1 mtr. make- dlink or equivalent			

SI No	Specification	Quantity	Rate	Amount
	Net Total	40.000each	@174.23/each	6969.20
3.063	OD216378/2025-2026			
	Supply ,installation ,testing and commissioing D-Link CAT6 24 port patchpanel Loaded.make -D-Link or equivalent			
	Net Total	1.000each	@4806.71/each	4806.71
3.064	OD216379/2025-2026			
	Supply,installation,testing and commisioning of following port switch (10/100/1000 mbps) 24 Port GIGABIT Desktop Switch D-Link/ TP-Link approved make,giving connections etc. complete as required.			
	Net Total	1.000each	@9665.94/each	9665.94
3.065	OD216380/2025-2026			
	Supply and fixing of CAT6 I/O socket in the existing suitable modular plate and suitable gi box ,giving proper connection as required			
	Net Total	17.000each	@454.66/each	7729.22
3.066	90.11.1.10			
	Supply and installation of sheet steel, phosphatised and painted, dust and vermin proof enclosure of MCB DB including copper /brass bus bar, neutral link, earth bus and DIN rail suitable for fixing MCB/ isolator etc. fixed on wall using suitable anchor bolts or fixed in recess including cutting hole on the wall , making good the damages, colour washing etc. as required4 way (8+12) - three phase double cover (IP 42/43)			
	Net Total	1.000each	@2897.42/each	2897.42
3.067	90.11.1.12			
	Supply and installation of sheet steel, phosphatised and painted, dust and vermin proof enclosure of MCB DB including copper /brass bus bar, neutral link, earth bus and DIN rail suitable for fixing MCB/ isolator etc. fixed on wall using suitable anchor bolts or fixed in recess including cutting hole on the wall , making good the damages, colour washing etc. as required8 way (8+24) - three phase double cover (IP 42/43)			
	Net Total	3.000each	@4878.24/each	14634.72
3.068	90.11.1.15			
	Supply and installation of sheet steel, phosphatised and painted, dust and vermin proof enclosure of MCB DB including copper /brass bus bar, neutral link, earth bus and DIN rail suitable for fixing MCB/ isolator etc. fixed on wall using suitable anchor bolts or fixed in recess including cutting hole on the wall , making good the damages, colour washing etc. as required6 way (8+18) - double cover TPN vertical DB with provision for fixing 4P MCB / Isolator/ RCCB/ RCBO as incomer and SP/ TP MCB as outgoing (IP 42/43)			
	Net Total	1.000each	@7295.85/each	7295.85
	Heading Total(Rs)			1607790.20
4 Septic tank				
4.001	2.8.1			

SI No	Specification	Quantity	Rate	Amount
	Earth work in excavation by mechanical means (Hydraulic excavator) /manual means in foundation trenches or drains (not exceeding 1.5 m in width or 10 sqm on plan), including dressing of sides and ramming of bottoms, lift up to 1.5 m, including getting out the excavated soil and disposal of surplus excavated soil as directed, within a lead of 50 m.All kinds of soil			
	Net Total	72.500cum	@359.72/cum	26079.70
4.002	4.1.8			
	Providing and laying in position cement concrete of specified grade excluding the cost of centering and shuttering - All work up to plinth level:1:4:8 (1 Cement : 4 coarse sand (zone-III) derived from natural sources : 8 graded stone aggregate 40 mm nominal size derived from natural sources)			
	Net Total	2.457cum	@7932.89/cum	19491.11
4.003	5.2.2			
	Reinforced cement concrete work in walls (any thickness), including attached pilasters, buttresses, plinth and string courses, fillets, columns, pillars, piers, abutments, posts and struts etc. up tot floor five level excluding cost of centering, shuttering, finishing and reinforcement :1:1.5:3(1 cement : 1.5 coarse sand : 3 graded stone aggregate 20 mm nominal size derived from natural sources)			
	Net Total	9.168cum	@12772.18/cum	117095.35
4.004	5.3			
	Reinforced cement concrete work in beams, suspended floors, roofs, having slope up to 15° landings, balconies, shelves, chajjas, lintels, bands, plain window sills, staircases and spiral stair cases up to floor five level excluding the cost of centering, shuttering, finishing and reinforcement, with1:1.5:3 (1 cement : 1.5 coarse sand (Zone III) derived from natural sources: 3 graded stone aggregate 20 mm nominal size derived from natural sources).			
	Net Total	5.376cum	@13442.14/cum	72264.94
4.005	5.9.1			
	Centering and shuttering including strutting, etc. and removal of form for:Foundations, footings, bases of columns, etc for mass concrete			
	Net Total	3.360sqm	@386.16/sqm	1297.50
4.006	5.9.2			
	Centering and shuttering including strutting, etc. and removal of form for:Walls (any thickness) including attached pilasters, butteresses, plinth and string courses etc.			
	Net Total	89.600sqm	@839.60/sqm	75228.16
4.007	5.9.3			
	Centering and shuttering including strutting, etc. and removal of form for:Suspended floors, roofs, landings, balconies and access platform			
	Net Total	10.800sqm	@961.24/sqm	10381.39
4.008	5.9.16.1			
	Centering and shuttering including strutting, etc. and removal of form for: Edges of slabs and breaks in floors and wallsUnder 20 cm wide			
	Net Total	16.500metre	@228.13/metre	3764.15


EST No. : OEO/KPHCC/EST/3170/2025_5_15_14 (Edit Id : 2)
 Cost Index (Place) : Kottayam. GST : 18%

SI No	Specification	Quantity	Rate	Amount
4.009	5.22.6			
	Steel reinforcement for R.C.C work including straightening, cutting, bending, placing in position and binding all complete upto plinth levelThermo - Mechanically Treated bars of grade Fe-500D or more			
	Net Total	1381.680kilo gram	@112.43/kilogram	155342.28
4.010	13.7.2			
	12 mm cement plaster finished with a floating coat of neat cement of mix:1:4 (1 cement : 4 fine sand)			
	Net Total	62.160sqm	@453.05/sqm	28161.59
	Heading Total(Rs)			509106.17
	Total Estimation PAC			28512524.75
SI No	Description	Percentage/LS		Amount
5	Lumsum Heading			
5.001	Centage Charge for planning, designing, tendering, supervising and handing over for Government Accredited Agencies for all works above Rs.1 crore and Upto 3 crore.			
		28512524.75	7.00%	1995876.73
5.002	Additional provision required for hike in GST rate (Based on Circular no. 79/2022/Fin dated 15.09.2022)			
		0.00	0.00%	359257.81
	Total Lumsum Amount			2355134.54
6	Extra Charges			
5.001	Provision for GST			
		28512524.75	18.00%	5132254.46
	Grand Total			35999913.75
	Round off			86.25
	Rounded Total(Rs)			36000000.00
	Rupees Three Crore Sixty Lakh			

Disclaimer:- This document has been generated using PRICE3.0 OEO software, but the officer of the organization who finalized the estimate bears sole responsibility for the

EST No. : OFO/KPHCC/EST/3170/2025_5_15_14 (Edit Id : 2)
Cost Index (Place) : Kottayam, GST : 18%

accuracy of specifications, rates, and data analysis.


സെക്രട്ടറി ഓഫീസർ